

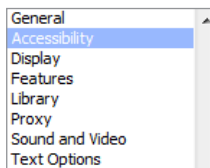
## Pixie® 4: Universal Access— Talk Button, Talking Interface, and Text-To-Speech

Students who have a hard time reading and spelling can use the Talk button to listen to the contents of a text box and learn how the computer reads the words. If you are working with students who have reading difficulties, they can use the text-to-speech to read directions in a text box. If students have limited vision, they can listen to the contents of a text box rather than struggling to see it. This is especially useful when you create an activity and do not have room to make the text large for everyone to read clearly.

### Enabling the Talking Interface

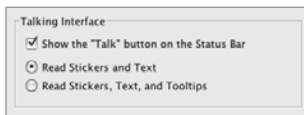
To enable the Talking Interface, go to the Edit menu (Windows) or Pixie menu (Macintosh) and choose Preferences.

Click the Accessibility option in the list.



Check the Enable Tooltips box.

Click the Show “Talk” Button on Toolbar check box to enable the Talk button on the Pixie toolbar. Pixie users can use the Talk button to hear names and tips for parts of the interface, buttons, stickers, and the contents of text objects.



Click the Read Stickers and Text radio button if you only want the talking interface to read the names of stickers and to read the contents of text objects when they are clicked.

Select the Read Everything radio button if you want the talking interface to read button text, text in dialogs, and use text-to-speech to describe objects and features in Pixie.

Click the OK button.

### Using the Talk Button

To use the talking interface while working in Pixie, click the Talk button on the toolbar.



Move the cursor over an interface object you want to hear what it does.

Click a sticker to hear a description of it.

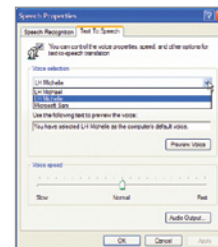
Click a text object. The text-to-speech engine will read the contents of the text object.

### Text-to-Speech

The Talk button utilizes the text-to-speech capabilities on your computer. If you do not like the voice of the text-to-speech, you can change this using the Speech control panel for your operating system.

**On Windows XP**—click the Start button and choose Control Panel. Double-click the Speech icon. Click the Text To Speech tab. Use the Voice Selection pull-down menu to choose the voice you want to use. LH Michelle is probably the most normal sounding voice on Windows.

**On Windows Vista**—click the Start button and choose Control Panel. Double-click the Text to Speech option. Use the Voice Selection pull-down menu to choose the voice you want to use. LH Michelle is probably the most normal sounding voice on Windows.



**On Macintosh OSX**—click the Apple menu and choose System Preferences. Click the Dictation & Speech button. Click the Text to Speech tab. Use the System Voice pull-down menu to choose the voice you want to use. Alex is probably the most normal sounding voice on OS 10.7.

